



PATHFINDER

Inside this issue:

Rabbi's Corner -- We Are What We Remember

Cantor Glikin's Remarks

- 2 *Summer is a time when we make memories. From camp to family trips to lazy days with friends, we have experiences we long remember. Following is an article I wrote for a national blog about the way we become what we remember.*

Memory is always selective. Some of the process of remembering is unconscious. Certain events stick out regardless whether we want them to or not. Yet, we hold a great deal of power in determining what our memories mean.

From Our President

- 3

Contributions

- 22

Calendar

- 23 I have a tendency to rewrite history. For example, my wife Ari and I will talk about a family trip with our two kids, and I'll say what a wonderful time we had and how fantastic the kids were.

So long as we do not distort what happened, we can reframe our memories in a positive way. How do we do this?

With an incredulous look, she'll ask me if I remember when Tam (our three-year old) woke up five times during the night, or if I've forgotten when Hannah (our five-year-old daughter) refused for half an hour to get out of the swimming pool. "Really?" I'll reply, "I don't remember that part."

Some might call this naiveté. I prefer to think of it as a way of making the most of the power of memory. We are what we remember.

1. **Talk about the positive.** In Jewish tradition we hold an annual meal called the Passover seder. Eating from a variety of symbolic foods, we tell the story of the Exodus from slavery in Egypt. In doing so, we could choose to remember all the bitterness and horrors of slavery. It was four hundred years of oppression.

Yet, recounting the period of slavery takes up just a small part of the ceremony. to help the oppressed

(Continued on page 9)



Cantor Glikin's Desk-- So, How Was Camp?

Since coming back from serving on faculty of Union for Reform Judaism's OSRUI (Olin Sang Ruby Union Institute) a couple of days ago, I have been bombarded with one question: "How was camp?" It is close to impossible to describe the experience of camp with all of its energy and intensity, but I am going to attempt it anyway. So, here it goes.

I'm going to start off by saying that spending two weeks on the faculty of OSRUI was akin to receiving a booster shot in Judaism. It is simply invigorating to be around campers and counselors who are excited to *be* Jewish and to *do* Jewish. Imagine 7th-9th graders volunteering to read Torah and lead prayer services. Imagine campers excited to learn about Israel and study Hebrew. Imagine rules and regulations of living in camp guided by Jewish ethics and communicated in a language that is undeniably Jewish because it is drawn from our rich textual tradition. Anyone concerned about Jewish continuity would feel relieved after spending even a day at a Jewish camp, where Judaism is not only *talked* about, but is also *lived* out as a vibrant experience. Anyone lucky enough to participate in this experience will be forever transformed and will never think about their Judaism in the same way again.

Camp is not only for the campers. OSRUI, same as other camps I imagine, serves as a leadership development ground for young adults. It is a place where young adults are granted authority and are given responsibility. It is inspiring to see these young adults rise to the occasion and exercise leadership in mature ways, impacting their lives and the lives of the campers, who look up to their counselors, specialists, and unit heads.

What is unique about OSRUI is that these young adults are developing not only their leadership skills, but also their Jewish leadership skills. Counselors are involved in leading prayers, in teaching Hebrew and Jewish subjects, in celebrating Shabbat with the campers. These counselors deepen their own Jewish knowledge and learn what it is to serve as Jewish role-models, while the campers benefit from seeing their counselors, not too far in age from themselves, living and learning Judaism.

As a member of the faculty, I was one of two adults attached to my unit. That there are adults available to the campers and counselors is beneficial on countless levels. I was able to offer guidance and counseling to staff and campers at various times throughout the two weeks as the intensity of overnight camp mounted. What is especially unique about OSRUI, however, is that the adults at camp are cantors, rabbis, and Jewish educators. Psychologists and inclusion specialists are on staff and available to the campers, but the clergy and Jewish educators are able to provide the necessary guidance from a Jewish perspective, contributing to the overall depth of the Jewish experience for the campers and staff.

"So, how was camp?" Camp was really amazing and enriching. I felt that I made a real difference in the lives of the campers and staff whom I encountered. I learned a lot from the campers, staff, and fellow faculty members. Most importantly, I got to live on Jewish time in a community of Jewish learners. Few things in the world can be more enriching!

- Cantor Vicky Glikin



From Our President --

I have been thinking about Alexis de' Tocqueville's visit to the United States, beginning in 1831 and stretching over two years. It affirms the impulse that helps to define Congregation Solel.

I know that many of you have encountered his two volumes entitled *Democracy in America*. A hallmark of public discourse into the twenty-first century, they remain an enduring staple of college classrooms as well as adult reading groups. If you will, please contemplate for a moment these frequently cited words of Tocqueville: "Americans of all ages, all conditions, and all dispositions constantly form associations."

Our synagogue's history reflects as much. The women and men who gathered together in 1955 assembled with a well-focused purpose. Mostly newcomers to the North Shore, they found themselves very much concerned about the Jewish education of their children. So they organized a loosely formed religious school well before they duly incorporated our synagogue. Soon thereafter the same folks came together as a discussion group examining pertinent Jewish topics, not unlike today's spirited lunch-hour sessions. It took the better part of two years before one thing led to another, culminating in the formal establishment of Congregation Solel in 1957. And several more years until they acquired a wooded land parcel on Clavey Road to construct our inspiring synagogue which they officially dedicated in the spring of 1964.

So the past is prologue. Frequently I hear from congregants, via an email or the telephone, wishing to discuss new initiatives for Congregation Solel. July provided some notable instances. Cynthia Plouche, our Vice President for Social Justice, reported on the upcoming nonpartisan town hall meeting on foreign policy with Congressman Brad Schneider. Anne Kleiner and Sue Ulman spontaneously stepped forward to lead a food drive for the depleted Deerfield Food Pantry. Barb Kessler previewed our forthcoming scholar-in-residence program with Rabbi Emeritus Dov Taylor. Marc Friedman, our Vice President for Worship, touched base about planning for the High Holidays in our much-changed sanctuary. Linsey Cohen and Marcia Denberg, enterprising Co-Chairs of our Membership Committee, filled me in on the wonderful events they have planned by taking advantage of social media. Meta Levin and Sharon Stein invited me to discuss how our congregation might involve itself with social justice initiatives within Lake County. Likewise, I heard from Holly Krakow, our Vice President for Community, about preparations for the annual Solel barbe-

que on August 23rd that Scott Schwartz will chair. (This multi-generational event drew 225 congregants in 2012). Julie Schaeffer, Vice President for the Religious School, helped me comprehend some key procedures and practices. Carol Greene, looking ahead to the spring of 2014, raised a question about the date of our beloved "One Book/One Solel." Betsy Lassar and Ross Erlebacher reported on the advanced planning for Congregation Solel's Rededication scheduled for March 21-23, 2014. Wendy Rhodes updated me on setting the groundwork for another Kol Zimrah concert in our sanctuary next May. I discussed with Geoff Prass, our Director of the Religious School, our shared passion for promoting the benefits of the Jewish summer camp experience. Gregg Hollander, Vice President for Administration, and I conferred about another revision of Solel's website. I attended a meeting of the Construction Task Force, chaired by Larry Mason, joined by Phil Cohen, Ed Bederman, and Allan Litwack, as well as representatives of our architect and general contractor. Lisa Wasserman, Vice President for Finance, provided me with an opinion on financial issues pertaining to our construction project. Josh Lowitz, our Vice President for Lifelong Learning, explored with me the prospect of a 50th anniversary remembrance of Dr. Martin Luther King's speech from our pulpit that is just ahead in June of 2016. And I maintained regular contact with Harold Chizewer and Jerry Wolf, Co-Chairs of the Campaign for Solel.

You might think of us as a purposeful lot. Congregation Solel's vibrant tempo embodies all sorts of compelling narratives. I think of all of this activity as deeply embedded in our beginnings. Indeed, the burning spirit of our founders renews itself constantly in the thirteenth year of the new century. As we embark upon our fifty-sixth year, our unbounded capacity for associating with our fellow congregants reaffirms our renowned vitality as a distinctive and historic Reform Jewish community.

Imagine Alexis de' Tocqueville re-appearing some 182 years after first touching ground in the United States. A knowledgeable guide has pointed the French traveler in the direction of Congregation Solel. The ensuing visit reaffirmed his faith in the enduring virtues of Americans associating with one another as a defining attribute of democracy.

I welcome the opportunity to talk with you, one-to-one, about your vision for Congregation Solel.

- Michael Ebner
(847)275-7441
president@solel.org

Days of Awe 5774/2013 Schedule of Worship and Fall Festivals

Selichot

Join us on *Saturday, August 31 at 7:00 pm.*

We will begin with a light meal then move into the sanctuary for Havdalah, study and a worship service with the Solel choir. This is a great informal opportunity to learn, reflect and prepare for our sacred days.

Adult Services

A formal service with sermons geared to adults and children in 6th grade and older. Doors open one hour before services begin. Our seating policy allows you to save one seat for a designated driver. Cards of Admission required.

Rosh Hashanah

Wednesday, September 4
Evening Service 8:00 PM

Thursday, September 5
Morning Service 10:00 AM

Board Reception 12:30 PM

Friday, September 6
Second Day Service 9:30 AM

Yom Kippur

Friday, September 13
Kol Nidre 8:00 PM

Saturday, September 14
Morning Service 10:00 AM

Afternoon Service 3:30 PM

Memorial/Yizkor Service 4:30 PM*

Concluding Service 5:00 PM*

Family Services

Thursday, September 5 and
Saturday, September 14 at 2:00 PM

Join us for lively, informal services for families with children. Guests are welcome and Cards of Admission are not required. Bring friends and family!

A Second Day of Rosh Hashanah Worship

Friday, September 6

Congregation Solel will conduct a second day of Rosh Hashanah worship on Friday, September 6th from 9:30 to 11:00 AM. The service will be in the chapel. Cards of admission are not required.

This turn – in keeping with our tradition of innovation in worship – arose from heartfelt sentiments expressed by congregants.

The Board of Directors, as well as our Rabbi and Cantor, played thoughtful roles in deliberating on the second day. Collectively we regard it as another benchmark in our history.

Our second-day worship service will include prayer, reflection, and Torah study. While our choir will not participate, Philip Orem will occupy his customary seat accompanying Cantor Glikin.

At the October 6th meeting of the Board of Directors – which congregants are *always* welcome to attend and make their voices heard – we shall assess the second day of Rosh Hashanah worship.

Days of Awe 5774/2013 Schedule of Worship and Fall Festivals

Tashlikh and Shabbat Shuvah

Friday, September 6

Tashlikh ceremony will start at 6:45 PM by the pond in Fink Park, followed by a short children friendly service. Bring your own shofar! If weather doesn't cooperate, Tashlikh will be at Congregation Solel.

Shabbat Shuvah Services will be in the Chapel at 7:30 PM.

Sukkot

All are invited not to one but two Sukkot celebrations! The first one will be our **Erev Sukkot Family Experience** on *Wednesday, September 18 at 6:30 PM*. Join us with family and friends for the first night of Sukkot for this short, engaging, and song-filled family experience for families with pre-readers. If you liked Pray N' Play this is the service for you! The service will be followed by child friendly snacks. Come celebrate and have fun with your children and grandchildren!

If you can't come on Wednesday, don't worry, you can join us at our **Sukkah Decorating and Potluck Lunch** on *Sunday, September 22* right after Religious School. We will start with a potluck lunch and Sukkah decorating at 12:00 PM followed by Sukkot Service under the sukkah at 1:00 PM. Bring a dish that can be shared with 8-10 people and we will provide dessert.

Guests are welcome for both events.

Simchat Torah Yizkor Service

Thursday, September 26 at 10:30 AM

Location to be determined

Simchat Torah

Friday, September 27

Evening Service/Consecration 6:30 PM

We will celebrate the completion of the reading of the Torah and beginning the new reading cycle.

NOTE: Sukkot and Simchat Torah events and services are for members of all ages!



A colorful floral illustration on aged parchment paper, featuring various flowers in shades of pink, purple, yellow, and green, with a dark purple bird perched on a branch.

High Holy Days Tashlikh & Shabbat Shuva

A larger, more detailed floral illustration on aged parchment paper, similar to the one above, with a dark purple bird perched on a branch.

At Fink Park Pond & Congregation Solel

September 6, 2013 6:45 pm – 8:30 pm

6:45 pm - Tashlikh at Fink Park Pond

(if weather doesn't cooperate it will be inside Congregation Solel)

Stay for a short children friendly service after Tashlikh ceremony

7:30 pm - Shabbat Shuvah Service

**For more information please contact Congregation Solel at
847-433-3555 or email us at soleloffic@solel.org**

Looking for a Place to Celebrate the High Holidays???

Join Congregation Solel's Family Services!



Family Services

Rosh Hashanah: Thursday, September 5 at 2:00 pm

Yom Kippur: Saturday, September 14 at 2:00 pm

Join us for lively, informal services for families with children. Guests are welcome and tickets are not required. Bring friends and family!



Tashlikh and Shabbat Shuvah: Friday, September 6 at 6:45 pm

Tashlikh ceremony will start by the pond in Fink Park, followed by a short children friendly service. Bring your own shofar! If the weather doesn't cooperate, Tashlikh will be at Congregation Solel.

Shabbat Shuvah Services will follow in the Chapel at 7:30 pm.



Erev Sukkot Family Experience: Wednesday, September 18 at 6:30 pm

Join us with family and friends on the first night of Sukkot for this engaging and song-filled family experience for families with pre-readers. If you like Pray 'n Play, this is the service for you! The service will be followed by child friendly snacks. Come celebrate and have fun with your children and grandchildren!



Simchat Torah: Friday, September 27 at 6:30 pm

We will celebrate the completion of the reading of the Torah and the beginning of the new reading cycle.

All of these events are free and open to the community.

No tickets are required.

RSVP appreciated to soleloffic@solel.org or (847) 433-3555.



Congregation Solel • 1301 Clavey Road • Highland Park, IL 60035

P: (847) 433-3555 • soleloffic@solel.org • www.solel.org

Pray 'n Play



This isn't your ordinary Tot Shabbat!

Join other families with children 0-5 years of age for a fun, interactive “Gymboree-style” Shabbat program, featuring music, maracas, puppets & parachutes.

Followed by a complimentary bagel brunch and playtime.
Older siblings are welcome to attend!

Come, sing, play, make friends!!

Led by Cantor Vicky Glikin



Saturday Mornings

10:30 am

Congregation Solel

1301 Clavey Road Highland Park

August 10

December 7

March 1

October 12

January 11

April 12

November 2

February 8

May 10

Questions?

Please contact our office at 847.433.3555 or soleloffic@solel.org



Rabbi Moffic's Corner

(Continued from page 1)

Most of it focuses on the sweetness of freedom, the imperative of our time, and the responsibility to tell the story of the Exodus to the next generation.

2. **Write a gratitude journal.** Writing about an event shapes the way we remember it. It helps us determine its meaning. We can apply this truth in so many ways.

Every night before bed, for example, I sit with my kids and ask them three things they are grateful for. Even if they had a tough day, focusing on the positive parts of the day reframes it. They often go to sleep with a laugh or smile.

3. **Let time work its magic.** Mark Twain famously said that "I've had a lot of worries in my life, most of which never happened." When something bad happens to us, we often feel as if it is the end of the world.

I see this quite frequently among my high school students if they get a low grade on a test. Yet, after a few days or weeks, the test is forgotten.

The same is often true with us. What seems awful now becomes manageable, or even positive, later. Perspective can change the meaning and relative significance of the past.

4. **Write the story of which you want to be a part.** A rabbinic mentor once told me to "make up a good story, a noble prevarication, about your congregation and tell it to anyone who will listen. Even if it's not true, after a few years, people will try to live up to it."

He captured an essential truth about people. We live up to the narratives we tell ourselves. We make decisions and act in certain ways because it fits into our story. If we change that story, we can change our lives.

A decision once thought of as a failure can become a learning experience. A painful ending to a relationship can become an experience when we learned about ourselves and what we need from a spouse or partner.

"Life," philosopher Soren Kierkegaard once said, "is lived forward and understood backward." The power to understand the backward part of lives lies within us. We can't change what happened, but we can change what it means. What we choose to remember helps shape who we decide to become.

- Rabbi Moffic



Malcom Gladwell
Tuesday, October 1, 7:00 pm

Why are we so often surprised when underdogs win? Do Goliaths make mistakes in spite of their strength—or because of it? Why are the childhoods of people at the top of so many professions marked by deprivation? Malcolm Gladwell, uncovers the hidden rules that shape the balance between the weak and the mighty.

Malcolm Gladwell has been a staff writer with The New Yorker magazine since 1996 and is the author of several books.

Alan Dershowitz and Jeffrey Toobin
Monday, November 4, 7 pm

You know that Alan Dershowitz, the preeminent defense lawyer in America today, has had an impact on the lives of storied clients like O. J. Simpson, Claus von Bülow, Bill Clinton, Julian Assange, Jeffrey MacDonald, Patty Hearst, Mike Tyson, and many more. But who has affected Dershowitz himself? The attorney and author is now Taking the Stand in a new memoir and on 92Y's Stage. Jeffrey Toobin, author (*The Oath: The Obama White House and the Supreme Court*), New Yorker writer and CNN analyst, interviews Dershowitz. Thane Rosenbaum will moderate.

Ari Shavit with David Remnick:
The Tragedy and Triumph of Israel
Tuesday, November 19, 7:15 pm

Haaretz senior correspondent Ari Shavit joins New Yorker editor David Remnick for an incisive analysis of the Jewish state's fraught history—and its prospects for the future. Shavit's new book, *My Promised Land: The Triumph and Tragedy of Israel*, is the sweeping result of his 30 years in the trenches of Israeli society and politics.

Ari Shavit is a leading Israeli columnist and writer. David Remnick, editor of The New Yorker since July, 1998, is the author of several books, including *King of the World*, *Resurrection*, and *Lenin's Tomb*.

Cost: \$10 per person per event OR Buy 3 for \$25

Call the office for more information

Rosh Chodesh Celebration for Women Monday, August 5 at 7:00 pm



Celebrate the beginning of the month of Elul!

Rosh Chodesh is a celebration of ourselves, our uniqueness as women, and our relationship with the Divine. The month of Elul calls on us to *reflect* in preparation for the High Holidays. Join us as we make new friends, see familiar faces, and learn more about ourselves and each other through **gentle yoga and meditation**.

Please bring an appetizer or main dish to share. In the spirit of tzedakkah, please also bring non-perishable food donations for the Deerfield Food Pantry.

7:00–7:20 pm – Social time – get to know the other women of Solel and nosh.

7:20–7:50 pm – Rosh Chodesh ritual led by Cantor Glikin.

7:50–9:00 pm – Gentle yoga and meditation session led by a certified yoga instructor, followed by a special activity led by Cantor Glikin. All yoga levels are welcome. No previous experience required. Chair yoga is available. Please wear comfortable clothes and bring a yoga mat, if you have one. We will have mats for those who need them.

This Rosh Chodesh Celebration is hosted by
Holly Krakow and Beth Sanchez
Please RSVP to Solel's office at soleloffic@solel.org.

Questions? Please be in touch with [Cantor Vicky Glikin](#).

We look forward to seeing you at this wonderful event for women!

Solel Trip to Russia/ Ukraine Being Planned

We are excited to announce that a Solel trip to Russia/ Ukraine is being planned for May 19-29, 2014. The trip will be lead by Cantor Vicky Glikin, who lived in Kiev until she was 13 years old. Three cities will be visited: St. Petersburg, Moscow, and Kiev. The trip will visit cultural sites, as well as sites of Jewish interest. Included amongst the cultural sites will be: the Hermitage in St. Petersburg, Red Square, the Tretyakov Gallery in Moscow, and St. Sophia Cathedral and the Golden Gate in Kiev. Of Jewish interest will be a visit to the Grand Choral Synagogue in St. Petersburg, Shabbat services, meeting with the Progressive Jewish community in Moscow, and a trip to Babi Yar in Kiev.

This trip is being laid out by Mitchell Slotnick, of Ridgebrook Travel, who planned our recent very successful trip to Israel. Preliminary estimates of the cost of the

trip (based on 30 people) are \$4000 per person, double occupancy, plus air of \$1821. The single supplement would be \$1800.

There will be an informational meeting at Solel on Monday, September 23 at 7:30 pm. If you are interested in learning more about the trip, please RSVP with the Solel office at (847)433-3555 or at solelooffice@solel.org. If you have urgent questions that need answers before the September 23 meeting, please call Cantor Glikin or email at vglikin@solel.org.

We are looking forward to this exciting, once-in-a-lifetime trip!



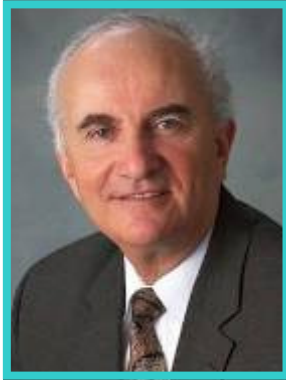
Congregation Solel • 1301 Clavey Road • Highland Park, IL 60035
P: (847) 433-3555 • solelooffice@solel.org • www.solel.org

**PROSPECTIVE MEMBER
RELIGIOUS SCHOOL OPEN HOUSE
&
SPLASH PARTY!**
Saturday, August 3rd
at the Lillian Lutz Recreation Center
1195 Half Day Rd.
Highland Park

**Come find out about Solel's
religious school, make havdalah,
and swim in the pool!**

4:30 pm Find Out About Solel's Religious School
5:15 pm Havdalah
5:30 pm Kids Swim!

Rabbi Dov and Judith Taylor Return to Solel Weekend of Nov. 1



Please add this to your iPhones, Blackberries, other smartphones, and calendars. Dov Taylor, Rabbi Emeritus, will return to Solel, with his wife, Judith, for a Scholar in Residence weekend November 1-3. Topics will be announced in the October Pathfinder.

Rabbi Taylor will speak following Shabbat evening services Friday, November 1. His presentation will be followed by a festive Oneg Shabbat, including home baked sweets.

Saturday morning, Rabbi Taylor will conduct a class at 10:30 am. All are invited to stay for lunch. On Sunday morning, he will lead a discussion about current issues during which a light brunch will be served.

This promises to be a stimulating weekend and we look forward to welcoming the Taylors back to Solel. More details and pertinent reading materials will be available before November 1.

Global Zero For High School Students Meet at Solel September 29

Global Zero is the international movement for the elimination of nuclear weapons worldwide. Powered by a group of 300 leaders and experts who support our bold, step-by-step plan to eliminate all nuclear weapons by 2030, the relentless creativity, energy, and optimism of young people and half a million citizens worldwide, we're challenging the 20th century idea of basing national security on the threat of mass destruction.

We've spent years building a nonpartisan, international community of influential political, military, business, civic, and faith leaders – matched by a global grassroots movement. We've got a plan. The challenge now is getting world leaders to act on it.

Young people all around the world play a huge role. Global Zero is the world's first post-Cold War generation. We offer opportunities for leadership, education, and personal and professional growth, and a unique chance to make a global impact. There are more than 150 chapters in 20 countries around the world.

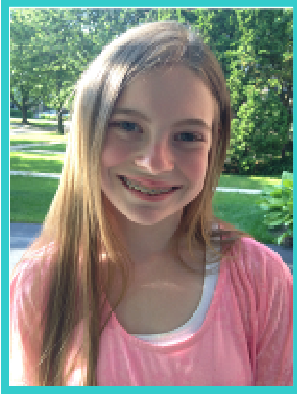
If you're a university or high school student, take the first step and visit our website for more information on how to get involved.

- Robert Meyers
www.globalzero.org

This year's Annual BBQ will be on Friday, August 23rd at 5:00 pm. During the BBQ we will be collecting food for the West Deerfield Township Food Pantry. We are asking everyone to bring a protein donation and one other item from the list in the flyer on page 16 to help us "meat the need".

*Flyers for both events are on the table outside the chapel.
Thank you!*

Mazel Tov on Aspen Pasikov's Bat Mitzvah!



Aspen Pasikov, daughter of Barry and Diana Pasikov, will become a Bat Mitzvah on August 24, 2013. Aspen spent her summer at Camp Marimeta for Girls and is beginning 7th grade at Elm Place Middle School in Highland Park this fall. While preparing for her Bat Mitzvah, Aspen learned the importance of structuring her time to find a balance between school, ballet, tennis, socializing with friends, camp, and studying her Torah Portion and prayers. The key message Aspen learned from her Torah Portion (Ki Tavo) is that every action has consequences. Therefore, it is important to consider the impact of one's behavior. As part of her Mitzvah Project, Aspen collected, donated, and delivered toys, food, and necessities for Children's Memorial Hospital, Orphans of the Storm, and the Highland Park Food Pantry. Aspen feels that giving to others is a gift to one's self, as knowing she has helped those less fortunate fills her with joy and happiness. In addition to sharing her Bat Mitzvah with her family and friends, Aspen is honored to be remembering Suzanne Moi, a beautiful little girl born in Paris, France in September of 1936, who was a Holocaust victim.

Daniel Greene Wins Book Prize from American Jewish Historical Society

Congratulations to Solel alumnus Daniel Greene, who completed his Jewish education at our Religious School. His book, *The Jewish Origins of Cultural Pluralism: The Menorah Association and American Diversity* (Indiana University Press, 2011) recently received the Saul Viener Book Prize from the American Jewish Historical Society.

The Jewish Origins of Cultural Pluralism follows a group of young Jewish Harvard students who in 1906 founded the Menorah Association, which advocated a pluralist America that would accommodate a thriving Jewish culture in mainstream American life.

Daniel Greene, son of longtime congregants Carol and Alan Greene, is Vice President for Research and Education at the Newberry Library in Chicago. Previously, he served as a historian at the United States Holocaust Memorial Museum.

Thank you to all who participated in the Refer A Friend Program! The best way to grow our Solel family is through word-of-mouth. The program was a success, thanks to you!

The lucky winner of the drawing for a \$50 gift card was **Kathy Keyser!** Please continue to pass on names of friends and family who are interested in learning more about Solel. This will keep our membership vibrant!

- The Membership Committee

We Honor our Campaign for Solel Donors

Throughout the course of the entire Campaign for Solel thus far, there has been an outpouring of love and support from members of our Solel family. The following list has been printed to honor all of our current and past members, clergy, and senior staff who saw the need for these important improvements to our spiritual home and stepped forward in support of Solel's future. These individuals have enabled us to create a beautiful new lounge and administrative suite, increase the size of our Endowment, and will allow for additional necessary improvements to Solel including a Highland Park-mandated sprinkler system to improve safety in our congregation, better accessibility, lighting and sound in the Sanctuary, Main Lounge and Social Hall and other key renovations to our *Bima* and other important spaces. These improvements will secure our future for generations to come.

Thank you to all who have participated. You honor us all through your commitment and passion for our shared spiritual home. The *Campaign for Solel* is a project for the whole Solel family.

Anonymous (10)

Gershen and Sally Abraham

Lawrence and Carol Adelman

Paul and Judith Altman

Ronald and Barbara Altman

Bruce and Marcia Balonick

Edwin E. and Judith T. Bederman

Natalie Belrose

Marc and Susan Benjamin

Leon and Karyn Benson

L. H. and Anne Bernbaum

Robert and Joanne Bernstein

Jack and Bobbie Beutel

Charles and Esther Bley

Steven and Pam Bloomberg

Paul and Lisa Blumberg

William and Lillian Bogolub Family Endowment

William and Andrea Bogot

Lila Bondy

Rita Brief

Michael and Julie Bringas

Robert and Belinda Brock

Stanton (z"l) and Judith Brody

David and Laurie Broutman

Kenneth and Roberta Brown

Roger and Barbara Brown

Steve and Marla Brown

Natalie Caplin

Harold and Linda Chizewer

John J. Cody and Linda L. Muskin

Steven and Loreli Cohn

Kenneth and Marcia Denberg

Sharon Diaz

Steven and Barbara Dibble

Phyllis Dolinko

Rivia Domash (z"l)

Warren and Joan Eagle

Darryl and Michael Ebner

Howard Epstein and Gay Sigel

Ross and Susan Erlebacher

Richard and Judith Fenton

Eugene and Karen Finerman

Steven and Robina Fisher

Richard and Carol Fleisher

Michael and Jean Freed Family Foundation

Jotham and Roberta Friedland

Joel and Stacy Friedland

Coleen and Marc Friedman

Howard and Judith Friedman

Stuart G. Gelfman and Wendy Shorr

Sherman and Miriam Gerber

Robert and Helene Gerstein

Cantor Vicky Glikin and Vlad Leybovich

Mark and Claire Golan

Richard and Janet (z"l) Goldberg

Peter and Carol Goldman

Donald A. and Gail Goldstein

Kenneth and Leslie Goldstein

Alan and Nancy Goodman

Stuart and Joanne Goodman

Diane Gordon

James and Donna Gottlieb

Richard and Kara Greenberg

Alan and Carol Greene

Faye Grossman

Michael and Fran Grossman

The Gruenhut Family

Lee and Ellen Gussin

Gary and Ruth Guth

Frank and Elaine Haney

Jack and Greta Heiman

David and Lisa Helfand

Richard and Carol Hillsberg

Gregg and Pamela Hollander

Thank You For Your Campaign for Solel Contributions

Marc and Cathy Horowitz
Bruce and Lauren Kaden
Jonathan and Susan Kaden
Louis and Ruth Kahnweiler Family Foundation
David and Arline Kallick
Harvey Kallick
David and Sandra Kaminsky
Gladys Kane
Phil Kaplan and Marcia Bogolub
Adam and Lisa Kaplan
Jerry and Arlene Karel
Sheldon and Lee Karon
Nancy and Marty Karp
Martin and B.J. Kass
Steve and Priscilla Kersten
Dennis and Barbara Kessler
Adam and Katherine Keyser
David and Marcy Kirshenbaum
David and Anne Kleinerman
Ernest and Barbara Koehler
Michael and Carol Kohn
Robert and Alice Kohn
Jeffrey and Holly Krakow
Thomas and Renee Krauss
Nancy Kullman
Scott and Betsy Lassar
Elliot and Frances Lehman
Gary and Judy Leven
Daniel and Deborah Levenson
Harriett Levine
Jonathan and Leslie Levine
Laurence and Mary Levine
Bud Levis (z"l)
Larry (z"l) and Debbie Levis
Roy and Janet Lipner
Allan and Karen Litwack
Phyllis Saxon Loeff
Lowitz Family
Shana Lowitz
Brian Marks
David and Lois Marks
Jack and Sheila Marks
James and Gail Marovitz
Lawrence and Susan Mason
Sally Maybrook
Suzanne Carter Meldman
Rachel and Jason Meltzer
Albert and Gwen Miller
Richard and Janet Mintzer
Rabbis Evan and Ari Moffic

Robert D. Nadler & Alice J. Anson
Barbara Niehus
Evelyn Padorr
Brian and Nancy Pastroff
Kenneth and Jennifer Peters
Geoff Prass and Rabbi Alison Abrams
Michael and Kimberly Qualizza
The Sylvia Radov Endowment Fund
Joseph M. Rafson and Cynthia R. Plouche
Diane, Joel and Julia Resnick
Wayne and Wendy Rhodes
Marilyn Richman
David and Marilyn Robbin
Lawrence (z"l) and Rochelle Rochell
Sol and Carolyn Rosen (z"l)
Marcia Rosenbaum
James and Janet Rosenbaum
Paul and Jennifer Rosenbaum
Harold and Linda Rosenson
James and Sheryl Rubel
Ellen Blumberg Rubert
The Rubinstein Family
Gerald J. Rudman
Edwin and Diana Ruthman
Gary and Lynn Salit
Frances Salpeter
Marlene Samson
William and Suzanne Samuels
Nestor and Beth Sanchez
Robert and Julie Schlossberg
Ken Schmetterer and Nancee Siegel
Daniel J. Schwartz and Charla B. Reinganum
Scott and Joellyn Schwartz
Lewis and Gail Segal
Richard and Caryn Segall
Laurence and Debbie Segil
Arthur Segil
Courtney and Edith Shanken
Harlan and Robin Shapiro
Jonathan and Katharine Shaw
The Shorr Family
Brian and Martha Silberman
Robert and Sandra Silver
Charles and Sondra Sonneborn
Michael and Sharon Stein
Robert and Sue Steiner
Doris Sternberg
Arvey M. Stone and Leslie Brookfield
Jane and Michael Strauss Family Foundation
Bernard and Caryl Susman

Campaign for Solel Contributions continued

*Rabbi Dov and Judith Taylor
Ken and Lisa Temkin
Thomas and Suzanne Tolpin
Fred and Brenda Turner
Cary, Sue, Ben, and Jason Ulman
David and Maxine Unger
Barbara Volin
Emily and Kevin Wallace
Michael and Lisa Wasserman
Daniel and Elizabeth Weil
Michael and Joan Weinberg, Jr.
Michael Alan Weinberg and Mary E. Rauen
Arvin and Susan Weindruch
Gerald and Barbara Weiner
Suzanne Weiskopf
Marvin and Rita Weiss
Richard and Susan Wellek
Jerrold and Janet Wolf
Lloyd and Caren Yanis
Ken and Pam Zasky
Burton and Deborah Zirin
David and Tracy Zirin
Joe and Dottie Zoller
Laura Zuckerman
Nancy Zuraw*

As of July 29, 2013

Visit Solel's Construction Zone

Sunday, August 4

10:00 am - 11:00 am

The Solel Construction Zone will open its door for viewing. You and your family are encouraged to stop by.

Please meet in the Family Learning Center.
Closed-toe footwear is required.

The end result -- completion date is 8/23/13 -- will amount to a significant milestone in the history of our congregation. It is exciting to have an early look as our project advances.

Larry Mason, chair of our construction task force, will be on hand to help us understand this immense and complex project.

For more information, contact the synagogue office at (847) 433-3555 or solelooffice@solel.org.

Solel College Committees Seeks Names of Your Student

Each year Congregation Solel's college committee takes an active role in maintaining communication with students who are attending college or graduate school.

At three key intervals on the Jewish calendar -- the High Holidays, Hannukah, and Passover -- our college students receive a meaningful message and some Jewish goodies from Rabbi Moffic and Cantor Glikin.

Please send names and a complete US Mail address to solelooffice@solel.org. It would be helpful if the subject line of your message read "College student."

Rededication of our Congregation March 21-24, 2014

Congregation Solel is preparing to commemorate and celebrate.

In the early spring of 2014, the congregation will mark a significant benchmark in our history. Although Congregation Solel was incorporated in 1957, it took another six years before ground was broken on a parcel of land that our founders purchased along Clavey Road.

Congregation Solel will mark the fiftieth anniversary of its dedication with a weekend of memorable events scheduled for March 21-24, 2014.



Among our honored guests for the rededication weekend is a distinguished alumnus of our religious school. Martha Minow, Dean of Harvard Law School, will speak at 2 pm on March 23rd. In a recent address to the Central Conference of American Rabbis, she told the assembly – Rabbi Evan Moffic and Rabbi Emeritus Dov Taylor were in attendance – about the enduring influence of Congregation Solel upon her life.

Co-chairs of the rededication committee are Ross Erlebacher and Betsy Lassar. Committee members include Linda Chizewer, Avery Cohen, Susan Kaden, Holly Krakow, Adrienne Levin, and Arthur Segil.

Further details in future issues of the *Pathfinder*. Please mark your calendar today for this wonderful weekend.



MAH JONGG NIGHT

Tuesday, August 6
7:30 pm
In the Lounge

All are welcome!

From never played to expert.

Bring your set and 2013 Mah Jongg card (if you have one).

And a snack to share if you desire.



Lunch & Learn with Rabbi Moffic

Downtown Lunch & Learn
August 21st at noon

Lunch & Learn at Solel
August 27th at noon

Join Rabbi Evan Moffic for these special classes as he reflects on events of both Jewish and broader public interest.

Help us feed families in need.



Food Donations for the West Deerfield Township Food Pantry is at an all-time **LOW.**

The number of families in need has **DOUBLED.**

The number of single recipients (mostly seniors) has **MORE THAN DOUBLED.**

Below is a list of the items needed:
(Most important is the need for protein.)

- **Protein** – Canned meat, tuna, stew, hash, baked beans, chili, peanut butter, etc.
- **Canned fruit** – peaches, pears, fruit cocktails, applesauce.
- **Side dish mixes** – rice, potatoes, pasta.
- **Fresh Fruits & Vegetables** – including tomatoes
- **Paper products** – toilet paper, paper towels, tissues, etc.
- Cereal, juice, soup, laundry detergent small size, dish detergent, cleaning products, tooth-

**** Donations can be dropped off at Congregation Solel anytime or bring to the Annual BBQ on August 23.**



Congregation Solel • 1301 Clavey Road • Highland Park, IL 60035
P: (847) 433-3555 • soleloffice@solel.org • www.solel.org

Annual Solel BBQ

August 23



5:00 pm - BBQ

6:30 pm - Shabbat service followed by oneg

BBQ will be at Solel, outside if weather permits

Cost: \$25/ family

\$10/ individual adult



Please RSVP online at www.solel.org or fill out the form on the bottom of this flyer and return it to the synagogue office.

Please register by Friday, August 16 online at www.solel.org, soleloffic@solel.org or by returning this form to the synagogue office.

Name(s): _____

Number of Adults: _____

Number of Children: _____

Number of Vegetarian Meals: _____

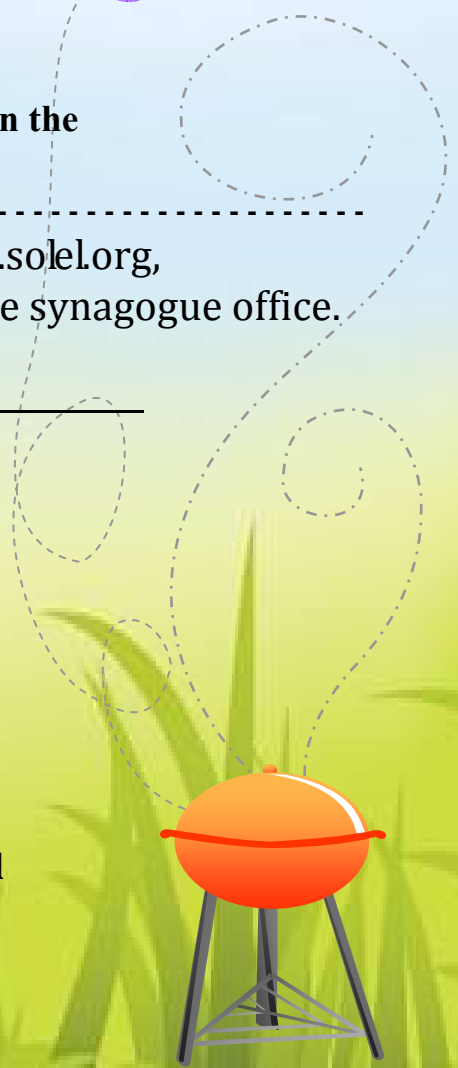
Total Due: _____

Please accept my check in the amount of: _____

Please charge my: VISA * MasterCard * Discover Card

CC #: _____

Expiration Date: _____



Congregation Solel • 1301 Clavey Road • Highland Park, IL 60035
P: (847) 433-3555 • soleloffic@solel.org • www.solel.org

Solel Participates in County-Wide Healthcare Survey

Recently I had eye surgery. I had good medical care. I understood the situation, was able to ask my doctor questions, understood post-operative instructions, as well as the directions on the eye drops prescribed for me and had a patient husband with a car, for which we could afford the gas to drive me to and from medical appointments.

Not everyone is so lucky. That's the reason that Lake County United (LCU), of which Congregation Solel is an active member, is researching the issue of access to quality medical care in Lake County.

Soon you will see tangible evidence of that commitment in the form of brief (one page) surveys. They will be available at Solel or through Solel's representative to the LCU steering committee, Meta L. Levin, meta.levin@comcast.net. Please take two minutes to complete and return them to the Solel office or to Meta before September 23, 2013.

Composed of both faith-based and secular organizations in the county, Lake County United is a nonpartisan community organizing entity that targets broad issues of concern to its member organizations. Solel's membership and participation is part of its historic commitment to social justice and directly connected to its membership and participation in Just Congregations, the congregational organizing and social justice arm of the Reform Jewish movement.

A couple of years ago, Solel's Just Congregations Aging with Dignity Task Force partnered with a number of other LCU members to investigate options and resources for older residents who choose to age in their own homes.

In 2012, when Vista Health Care, a private entity that owns the only hospitals in the Waukegan area, asked the Illinois Hospital Review Board for permission to build a new facility in Lindenhurst, various community groups asked LCU to weigh in. Although LCU does not take a stand on such matters, members did do some research, quickly realizing that the wider issue is access to quality health care.

Recognizing that this is an issue that affects everyone, LCU formed a working committee, composed of representatives from a number of member organizations, including Solel. Our research showed that access to health care is at once an economic, educational, and employment issue.

We proposed doing a limited survey to better understand the scope of the problem and approached the Lake County Health Department (LCHD) for help. The LCHD was thrilled. Our project tied in with a county-wide survey on access to health care that they were planning. By distributing the survey through LCU members, the LCHD could get information from people representing a wide range of socio-economic, ethnic, and educational levels within the county.

From LCU's standpoint, we had access to the LCHD's expertise, especially their ability to pre-test the questions for bias and translate them into Spanish.

Lest you wonder what this has to do with you, think about it. Should there be an outbreak of some illness, it would easily spread via those who do not have access to health care or who cannot understand the instructions given them by medical professionals, do not have the money to fill prescriptions or cannot afford to take time off of work while they recuperate. We are talking about people who are Caucasian, African American, Hispanic, Native American, Asian, and any other ethnic derivation you can imagine, and, yes, even Jewish. They include those who have a language barrier, poor education, or physical or mental handicaps.

The survey is the first step in assessing the problem in Lake County. If you have any questions or need surveys, contact Meta Levin at meta.levin@comast.net.

- Meta L. Levin

Correction Note:

In the June/July edition of the *Pathfinder*, it should have stated that Michael Ebner is the **30th** President of Solel.

President Michael Ebner and the entire Board of Directors cordially invite the members of Congregation Solel to the annual Board Reception in honor of the New Year, 5774.

Rosh Hashanah

Thursday, September 5, 2013 at 12:30 pm



The Board Reception is an opportunity to celebrate and socialize with your Solel family and friends.

Whether you plan on attending Rosh Hashanah morning services, the Family Service or both, everyone is welcome to attend.

Updating Your Solel Calendar with Future Events in 2013-2014

September 15, 2013 at 2:00 pm: Congressman Brad Schneider (IL 10th CD) will conduct a public nonpartisan informational session hosted by Congregation Solel

October 6, 2013 at 2:00 pm: "Not for Women Only: A Spirited Solel Symposium on Sheryl's Sandberg's *Lean In*".

November 1-3, 2013: Scholar in Residence Weekend with Rabbi Emeritus Dov Taylor (this represents a change in dates from previous announcements).

November 8, 2013 at 7:30 pm: 4th Annual Veterans' Day Commemorative Shabbat.

January 17, 2014 at 7:30 pm: 5th Annual Martin Luther King, Jr. Commemorative Shabbat.

February 7-9, 2014: Snowbird Shabbat in Florida

March 21-23, 2014: 50th Anniversary Re-dedication of Congregation Solel.

April 13, 2014 at 1:00 pm: One Book/One Solel (reading assignment pending)

May 4, 2014 at 2:00 pm: Kol Zimrah Concert at Congregation Solel

For details please contact Michelle Raz at the Solel office at solelooffice@solel.org or call Michelle Raz at (847) 433-3555.

Thank You For Your Contributions

Capital Campaign

Ed and Judy Bederman, in honor of the presidents Larry Mason and Michael Ebner

Harold and Linda Chizewer, in honor of Rachel Wolf's marriage

Nancy Kullman, in memory of Harry Bekenstein

Campaign for Solel

New and additional donations during the past month are identified on Pages 14, 15 & 16.

Human Needs Fund

Julie and Michael Bringas, Elizabeth and Andrew Cohen, Linsey and Timothy Cohen, in memory of Lucy Flom

Lynn and Gary Salit, in memory of Mae Wolfson

Music Fund

Joan and Warren Eagle, in memory of Laura Golden

Beth and Nestor Sanchez, in memory of Laura Golden

Robert and Julie Schlossberg, in memory of Laura Golden

Susan and Richard Wellek, in memory of Laura Golden

Rabbi's Discretionary Fund

Joan and Warren Eagle, in honor of Joanna Friedman's marriage

Joan and Warren Eagle, in memory of Fanny Wolf

Margot Goldsmith

Jack and Betsy Karp, in memory of Eva Karp

Mike and Carol Kohn, in honor of Marcia and Ken Denberg

Carol and Mike Kohn, in memory of Lori Loeb

Jason and Rachel Tarsney, in honor of the naming of Gavin David Tarsney

Tribute Fund

Brian and Sherri Browdy, in memory of Leslie Ann Browdy

Carol and Lawrence Adelman, in memory of Sylvia Appelman Durbin

Marcia and Bruce Balonick, in memory of Fanny Wolf

Sue and Charles Bergen, in honor of the marriage of their daughter, Alice Elizabeth Bergen to Lt. David Michael Phillips

Natalie Caplin, in memory of William Earl Caplin

Barbara and Steven Dibble, in memory of Gertrude Eisenbud Dennison

Coleen and Marc Friedman, in memory of David Erdman

Coleen and Marc Friedman, in memory of Pat Robinson

Richard and Kara Greenberg, in memory of Dolores Greenberg

Carol and Alan Greene, in memory of Clarabelle Lake

Carolyn and Howard Haas, in memory of Robert Haas

Richard and Carol Hillsberg, in memory of Beatrice Hillsberg

Arline and David Kallick, in memory of Elizabeth Kallick

Lee and Sheldon Karon, in memory of Bert Karon

Renee and Thomas Krauss, in memory of Ruth Juliana Haberer

Judy and Gary Leven, in memory of Marshall Leven

Carol and Randall Miller, in memory of Walter Schloss

Wendy and Wayne Rhodes, in memory of Fanny Wolf

Wendy and Wayne Rhodes, in honor of Rachel Wolf's marriage

Marilyn M. Richman, in memory of Selma Melvoin

Renate Speigel, in memory of Joseph Speigel

William and Suzanne Samuels, in memory of Edward Bazelon

Gary and Joyce Stetson, in memory of Phil Stetson

Barbara and Fred Turner, in memory of Joseph Speigel

Barbara Volin, in memory of Edward Bazelon and in honor of Emily Kanarek's marriage

Elizabeth and Dan Weil, in memory of Edward Matz, Jr., Evelyn Matz, and Ann Noble

Tribute Fund (continued)

Suzanne T. Weiskopf, in memory of Larry Tyser

Susan and Richard Wellek, in memory of Mae Wellek

Susan and Richard Wellek, in memory of Fanny Wolf

Laurence and Deborah Wilneff, in memory of Esther Wilneff

Jerry and Jan Wolf, in memory of Allan Harris

Laura Zuckerman, in memory of Nathan Zuckerman

David and Debbie Chizewer & Rabbi Jeffrey and Julie Weill, in honor of Harold and Linda Chizewer's 49th Anniversary

As of July 29, 2013

Stock Transfers to Congregation Solel

In order to make stock transfers from your accounts to Congregation Solel, the congregation works with First Midwest Financial Network. Your broker will need the following information to forward stock to our broker:

DTC # 0075

Account # 19324342

As always, your contributions to Congregation Solel are tax deductible to the extent allowed by law. If there are any questions, please call Allan Litwack, Executive Director, at (847) 433-3555, ext 225.

Mazel Tov to

Sue and Charles Bergen, on the marriage of their daughter, Alice Elizabeth Bergen to Lt. David Michael Phillips.

Joanne and Bob Berstein, on the birth of their grandson, Samuel Asher Stulac Bernstein. Parents Dr. Ari Bernstein and Dr. Sara Stulac.

Linda and Harold Chizewer, on their 49th anniversary.

Congratulations to Courtney and Edie Shanken, on the birth of their grandson, Carter Jameson Woycke.

Drs. Ellen Diamond and Sherwin Waldman, in honor of Nelson Taylor's conversion.

Jerry and Jan Wolf, on the marriage of their daughter, Rachel Wolf.

Condolences to...

Jeff and Judith Golden, on the passing of their sister, Laura Golden.

Bobbie Gordon, on the passing of her husband, Gill Gordon.

Ellen and Lee Gussin, on the passing of her mother, Julie Shapera

Susan Richman, on the passing of her husband, Alvin Richman.

Rory and Dan Rubin, on the passing of their aunt, Lucy Flom.

Jerry and Jan Wolf, on the passing of their mother, Fanny Wolf.

Anne and David Kleinerman, on the passing of her mother, Ruth Umemoto.

August 2013

Sun	Mon	Tue	Wed	Thu	Fri	Sat
		Kindle Shabbat Candles at dinner or at the following times (CDT): 2.....7:52 pm 9.....7:43 pm 16.....7:34 pm 23.....7:23 pm 30.....7:12 pm		1 7:30 pm Choir Rehearsal	2 6:30 pm Shabbat Services	3 9:15 am Torah Study 10:35 am Morning Minyan 4:30 pm Religious School Information Meeting & Pool Party
4	5 7 pm Women's Rosh Chodesh Celebration	6 7:30 pm Choir Rehearsal	7	8 7:30 pm Choir Rehearsal	9 6:30 pm Shabbat Services	10 9:15 am Torah Study: 10:30 am Pray & Play 10:35 am Morning Minyan
11 9 am Exec Meeting 10:15 am Board Meeting	12	13 7:30 pm Choir Rehearsal	14	15 7:30 pm Choir Rehearsal	16 6:30 pm Shabbat Services	17 9:15 am Torah Study 10:35 am Morning Minyan
18	19	20 7:30 pm Choir Rehearsal	21 12pm Downtown Lunch & Learn	22 7:30 pm Choir Rehearsal	23 5:00 pm Solel BBQ 6:30 pm Shabbat Services followed by oneg	24 9:15 am Torah Study 10:30 am Aspen Pasikov Bat Mitzvah 10:35 am Morning Minyan
25	26	27 12 pm Lunch & Learn 7:30 pm Choir Rehearsal	28	29	30 6:30 pm Shabbat Services	31 10:35 am Morning Minyan 7:00 pm S'lichot

August Shabbat Services Schedule

Friday, August 2

Shabbat Services.....6:30 pm

R'eih, Deut. 11:26-16:17

Saturday, August 3

Morning Minyan.....10:35 am

Friday, August 9

Shabbat Services.....6:30 pm

Shof'tim, Deut. 16:18-21:9

Saturday, August 10

Torah Study.....9:15 am

Pray & Play.....10:30 am

Morning Minyan.....10:35 am

Friday, August 16

Shabbat Services.....6:30 pm

Ki Teitzei, Deut. 21:10-25:19

Saturday, August 17

Torah Study.....9:15 am

Morning Minyan.....10:35 am

Friday, August 23

Shabbat Services.....6:30 pm

Ki Tavo, Deut. 26:1-29:8

Saturday, August 24

Torah Study.....9:15 am

Aspen Pasikov Bat Mitzvah.....10:30 am

Morning Minyan.....10:35 am

Friday, August 30

Shabbat Services.....6:30 pm

Nitzavim- Vayelech, Deut. 29:9-31:30

Saturday, August 31

Torah Study.....9:15 am

Morning Minyan.....10:35 am

Want to inquire more deeply into a passage after the Shabbat service? Find the weekly parashot and commentaries at these links:

Weekly D'var: <http://urj.org/learning/torah/> or <http://www.reformjudaism.org/>



Parashot Summaries: <http://urj.org/learning/torah/summaries/>

Many Paths. One Community

We are a spiritual home that engages our members and community in *prayer, learning, and the pursuit of social justice*. We prize *inclusiveness, innovation, and involvement* in our programs, life cycle events, and leadership. Everyone who walks into our building should feel *inspired, uplifted, and connected*.

Pathfinder

1301 Clavey Road • Highland Park, IL 60035
Phone: (847) 433-3555 • Fax: (847) 433-3573
Rabbi's Study: (847) 433-3708
Religious School: (847) 433-3417
Email: soleloffice@solel.org
Website: www.solel.org



Rabbi: Rabbi Evan Moffic (emoffic@solel.org)
Cantor: Cantor Vicky Glikin (vglikin@solel.org)
Executive Director: Allan Litwack (allan@solel.org)
Director of Education: Geoffrey Prass (geoff@solel.org)
President: Michael Ebner (president@solel.org)
Rabbi Emeritus: Rabbi Dov Taylor (rabbitt@solel.org)

Pathfinder Deadline for Submissions:
The next Pathfinder will be published September 2013
Please submit material by email on or before August 15,
2013 in order for it to appear in the August Pathfinder.